

Archer façade



Cowan façade



Hunter façade

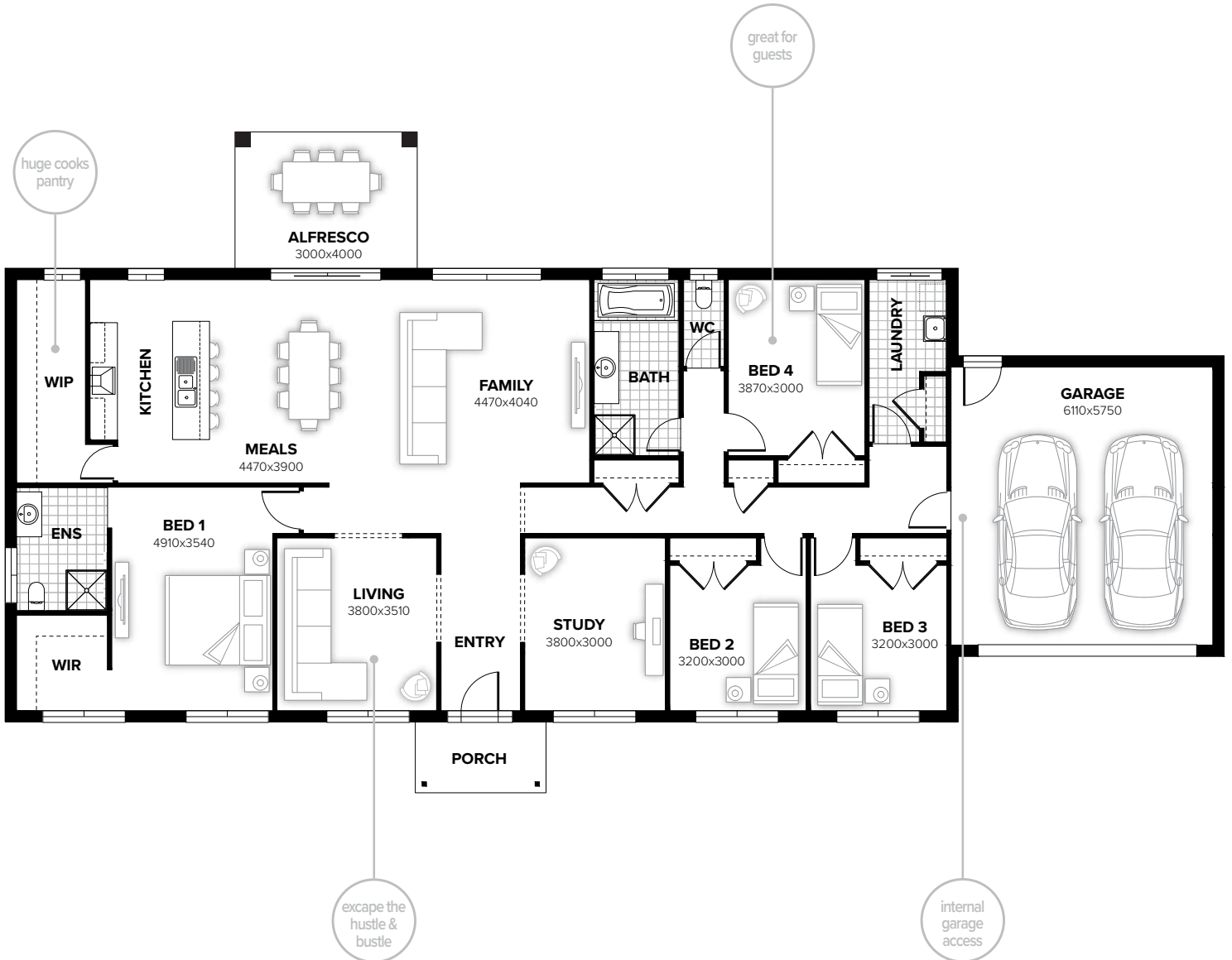


Walgan façade



# HUTTON 263

4 2 1 2



## FLOORPLAN OPTIONS

Want to put a personal touch on your home? Speak to your New Home Consultant about the exciting range of ready-to-go design options for this floorplan.

Popular design options include:

- Kitchen options
- Laundry upgrade
- Ensuite upgrade
- Grand alfresco option
- Garage options

residence	207.06sqm	22.29sq
alfresco	12.00sqm	1.29sq
porch	4.48sqm	0.48sq
garage	39.40sqm	4.24sq
<b>total</b>	<b>262.94sqm</b>	<b>28.30sq</b>

Listed details based on Archer façade floorplan (illustrated)

Call 13 BURBANK Visit [burbank.com.au](http://burbank.com.au)

**Burbank**   
#noplacelikehome

\*Copyright conditions. All photos and illustrations are representative only. Floor plans and specifications may be varied by Burbank without notice, the dimensions are diagrammatic only and a Building Contract with final drawings will display correct dimensions and detail. All designs are the property of Burbank and must not be used, reproduced, copied or varied, wholly or in part without written permission from an authorised Burbank representative. Copyright Burbank Australia (NSW) Pty Ltd. ABN 88 610 822 870. NSW BL 295627C. ACT BL 2016566.

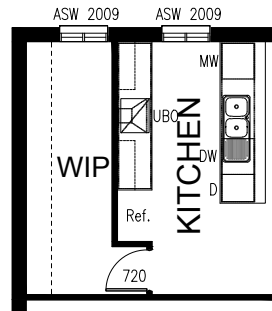
# FLOORPLAN OPTIONS

# HUTTON 263



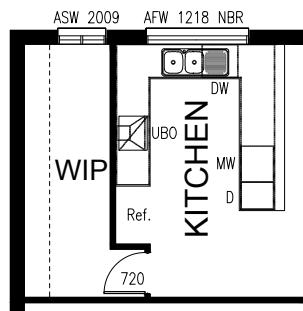
## OPTION K1

Relocate Kitchen island and base cabinet to external with 2no. 800mm base cupboards, 1no. laminated MW provision with pot drawer below, 2no. 150mm base cupboard, 1no. 600mm underbench oven with 600mm canopy range hood above, 1no. laminated DW provision, 1no 800mm base cupboard and 1no. 450mm drawers and 2No. 800mm overhead cupboards.



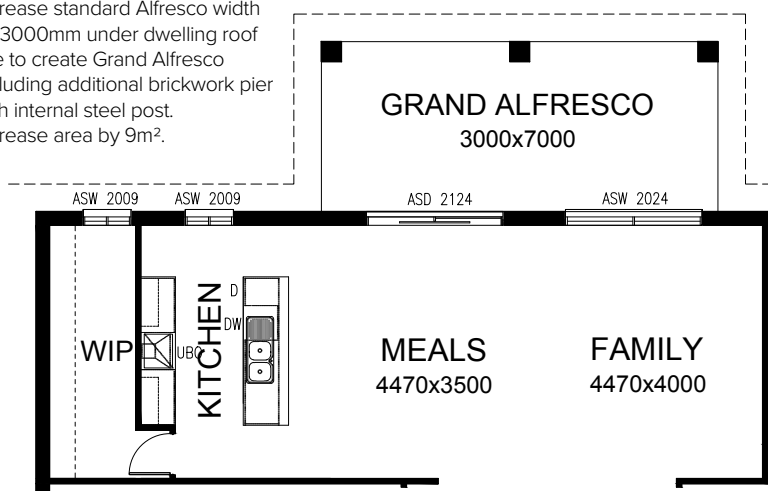
## OPTION K2

Provide Kitchen upgrade with 2no. 600mm base cupboards, 1no. laminated MW provision with pot drawer below, 1no. 600mm underbench oven with 600mm canopy range hood above, 2no. 1050mm blind base cupboard, 1no. laminated DW provision, 1no. 900mm base cupboard and 1no. 450 drawer with additional bench top and tiled splash back to suit. Provide 1200x1810mm aluminium fixed window with no bottom reveal in lieu of 2057x850mm.



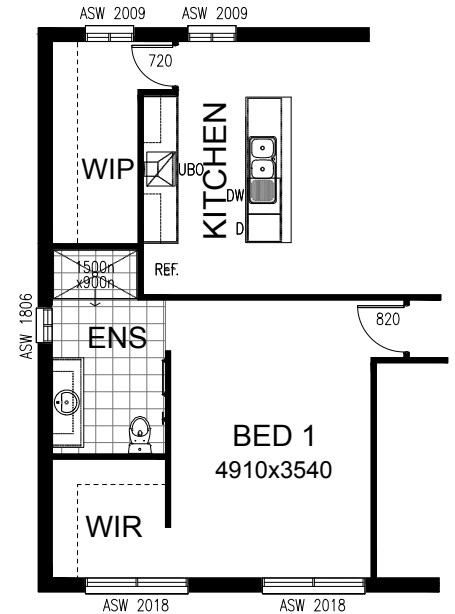
## OPTION EP1

Increase standard Alfresco width by 3000mm under dwelling roof line to create Grand Alfresco including additional brickwork pier with internal steel post. Increase area by 9m<sup>2</sup>.



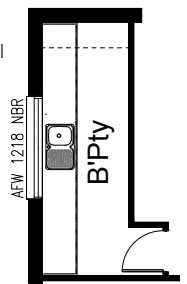
## OPTION ENS1

Provide Ensuite upgrade reducing WIP, providing 1500mm x 900mm tiled shower base in lieu of standard 900mm x 900mm, 1582mm wide vanity basin in lieu of standard 982mm wide vanity and provide 1800mm x 610mm aluminium window in lieu of standard 1027mm x 1210mm aluminium window to suit.



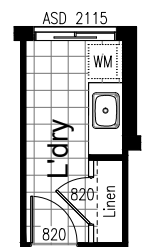
## OPTION K3

Provide Butler's pantry in lieu of WIP with additional 4no. 900mm base cupboard, 1no. 450mm base cupboard, 1no. single bowl sink with drainer, 1800mm(h) 4no. open shelves and additional tiled splash back and bench top to suit. provide 1200x1810mm aluminium fixed window with no bottom reveal in lieu of 2057x850mm aluminium sliding window.



## OPTION LD1

Provide Laundry upgrade with laminated insert trough, 1no. 800mm base cupboard, 1no. 400mm base cupboard and additional tiled splash back and bench top to suit.



Call 13 BURBANK Visit [burbank.com.au](http://burbank.com.au)

**Burbank**   
#noplacelikehome

\*Copyright conditions. All photos and illustrations are representative only. Floor plans and specifications may be varied by Burbank without notice, the dimensions are diagrammatic only and a Building Contract with final drawings will display correct dimensions and detail. All designs are the property of Burbank and must not be used, reproduced, copied or varied, wholly or in part without written permission from an authorised Burbank representative. Copyright Burbank Australia (NSW) Pty Ltd. ABN 88 610 822 870. NSW BL 295627C. ACT BL 2016566.

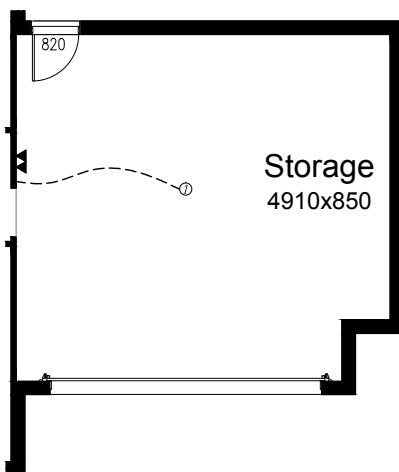
# FLOORPLAN OPTIONS

# HUTTON 263



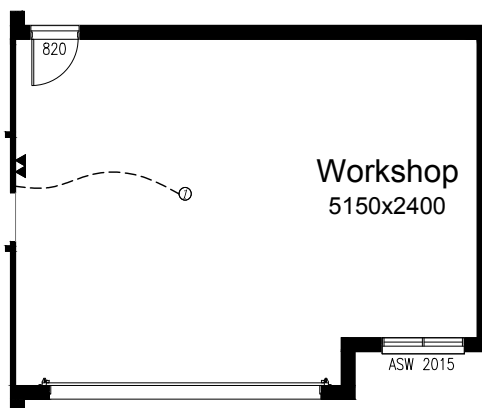
## OPTION G1

Provide extension to Garage to create additional Storage area.  
Increases area by 4.58m<sup>2</sup>.  
Increases width by 850mm.



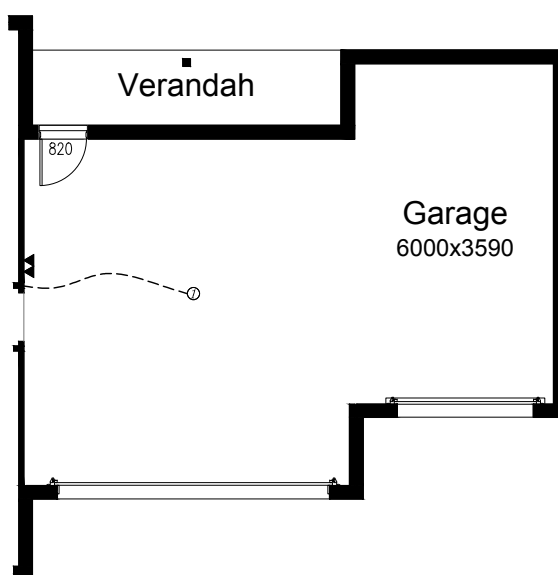
## OPTION G2

Provide extension to Garage to create Workshop area including additional 1450mm wide window to suit. Window height to match facade windows.  
Increases area by 13.51m<sup>2</sup>.  
Increases width by 2400mm.



## OPTION G3

Provide triple car Garage including additional panel lift garage door to front. Add roofed Verandah to rear of garage including concrete floor.  
Increases verandah area by 7.25m<sup>2</sup>.  
Increases garage area by 23.85m<sup>2</sup>.  
Increases width by 3600mm.



Call 13 BURBANK Visit [burbank.com.au](http://burbank.com.au)

**Burbank**   
#noplacelikehome

\*Copyright conditions. All photos and illustrations are representative only. Floor plans and specifications may be varied by Burbank without notice, the dimensions are diagrammatic only and a Building Contract with final drawings will display correct dimensions and detail. All designs are the property of Burbank and must not be used, reproduced, copied or varied, wholly or in part without written permission from an authorised Burbank representative. Copyright Burbank Australia (NSW) Pty Ltd. ABN 88 610 822 870. NSW BL 295627C. ACT BL 2016566.